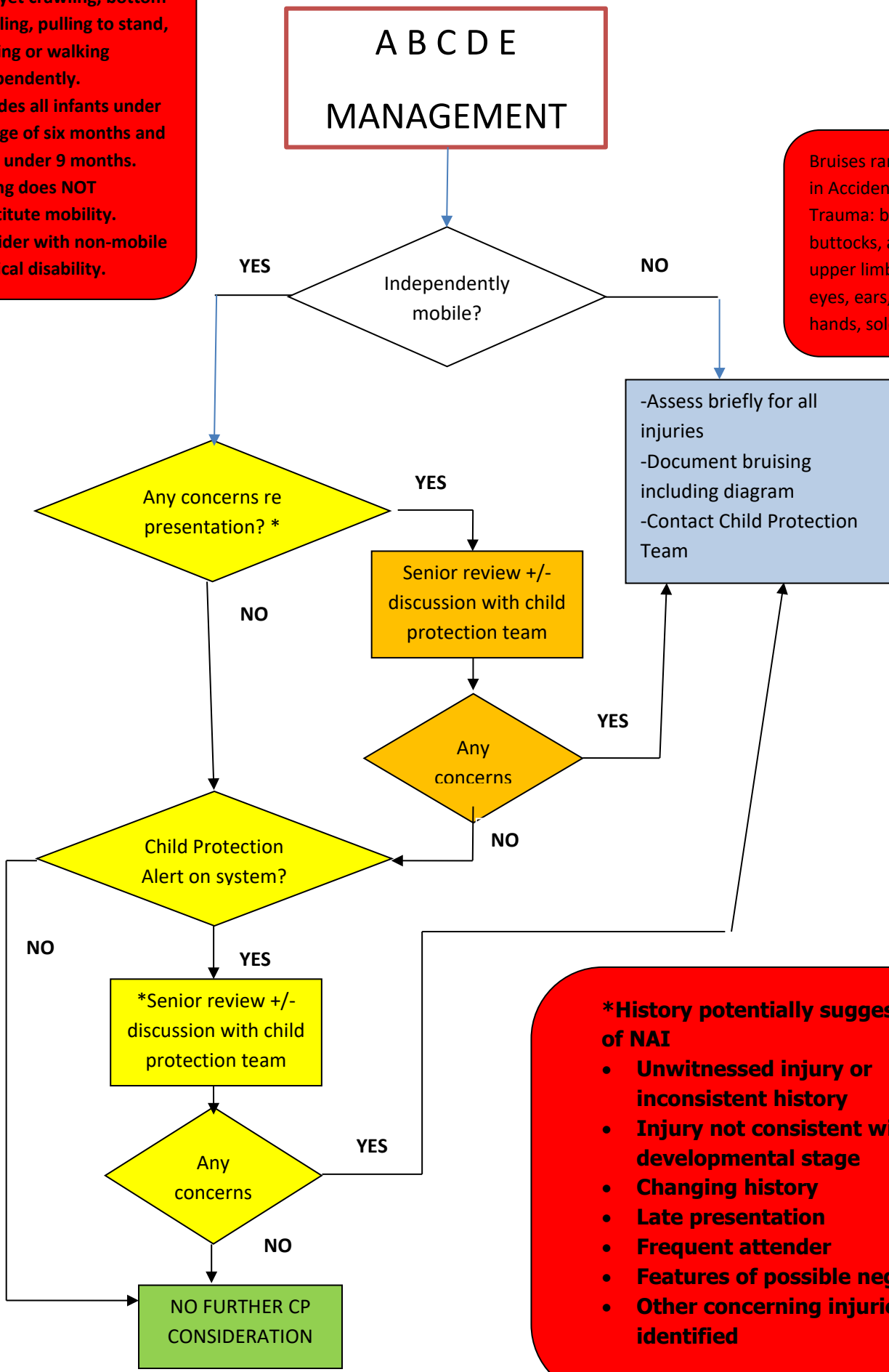


Child Protection Triage in Children

Presenting with Major Trauma

NOT INDEPENDENTLY MOBILE =
 NOT yet crawling, bottom shuffling, pulling to stand, cruising or walking independently.
 Includes all infants under the age of six months and most under 9 months. Rolling does NOT constitute mobility.
 Consider with non-mobile physical disability.

Bruises rarely seen in Accidental Trauma: back, buttocks, abdomen, upper limbs, cheeks, eyes, ears, palms of hands, soles of feet



***History potentially suggestive of NAI**

- Unwitnessed injury or inconsistent history
- Injury not consistent with developmental stage
- Changing history
- Late presentation
- Frequent attender
- Features of possible neglect
- Other concerning injuries identified